

Rovver 225



When you need an adjustable viewing height range and the power to inspect rough terrain, the ROVVER® 225 system is the inspection crawler to use. For optimum, large-diameter, 225 mm to 1500 mm (9 in. to 60 in.) pipe inspection, the ROVVER 225 features a pendant-controlled lift platform that adjusts the camera height from 150 mm to 300 mm (6 in. to 12 in.). The camera can stay centered in the pipe for optimum magnification and undistorted inspection in any viewing direction. This all-wheel-drive, rugged crawler is high-powered to move easily over debris and around multiple elbows. The remotely-operated clutch can release the wheels, allowing the operator to pull the crawler back in a free-wheeling operation. The ROVVER 225 carries pan-and-tilt or forward viewing color video cameras as well as retrieval, sensing or sampling equipment to distances up to 200 m (660 ft.). It is ideally suited for many applications due to its modular design and its ability to inspect inside pipes with diameters larger than 225 mm (9 in.). The ROVVER system's remote pendant enables the operator to raise and lower the camera, control focus and lighting, engage the clutch and steer the crawler when obstacles such as debris or offsets are present.

{tab=Features}

A fast, portable inspection solution for a wide variety of industries

With such a diverse range of features, the ROVER 125 is an essential tool for virtually any application—

The ROVER 100 packs enough power to inspect:

- Pipes from 150 to 900 mm (6 to 36 in.) inside diameter (ID)
- Restricted piping
- Large offsets
- Protruding pipe taps
- Pipes with many bends

Key Features and Benefits

- Adjustable platform lifts camera above liquids/debris and provides a view from the center of the pipe
- High-powered steerable crawler to move easily over and around debris and offsets
- Height-flexibility for more detailed inspections
- Quick disconnect allows for easy use, low maintenance and time savings
- Hand-held pendant for user-friendly control of lift platform, clutch, lighting, focus, direction and speed
- Rack-mount control unit can integrate into operator's existing vehicle
- Waterproof for humid, damp and underwater environments
- Compatible with ROVER® 400 and ROVER 600 crawlers, cameras and cables

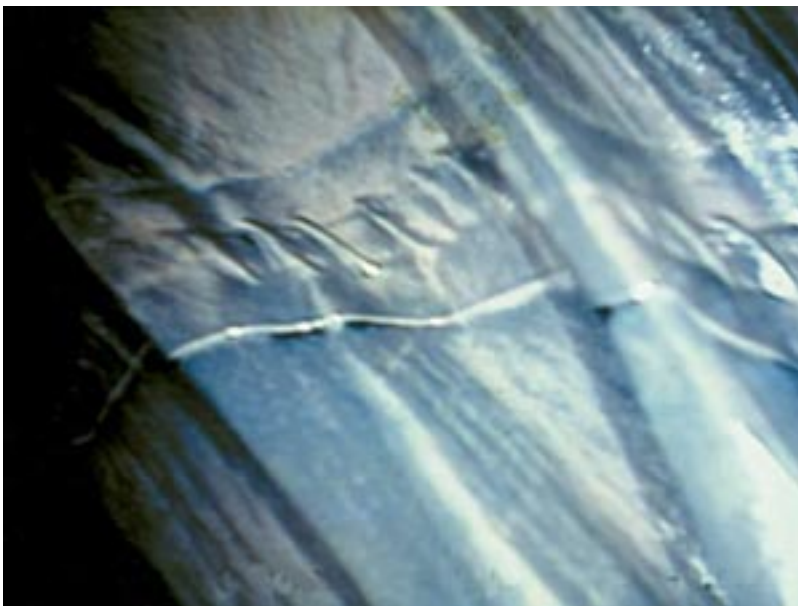
{tab=Applications}

- Air ducts and electrical conduits
- Lube oil and steam lines
- Steam headers
- Small pressure vessels and tanks
- Loose-parts retrieval

BMI Inspection



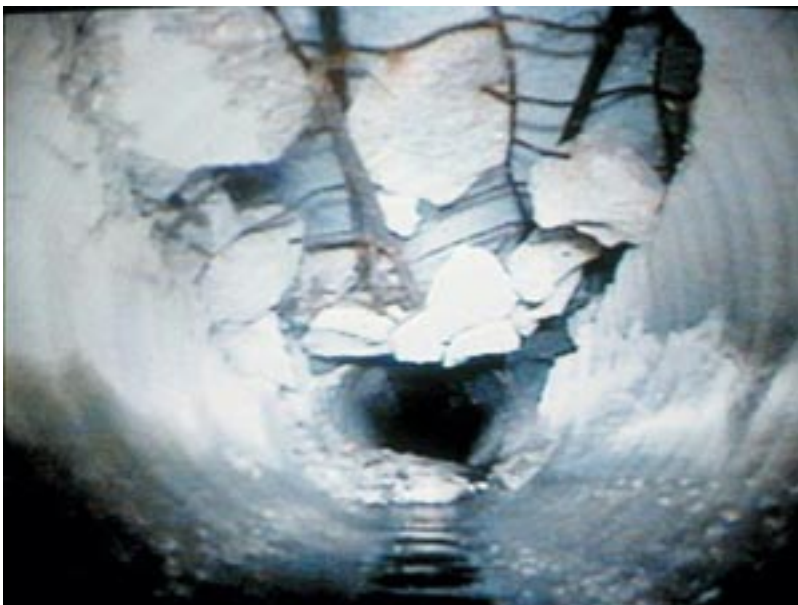
Lining Evaluation



Service Water Line



Concrete Pipe Collapse



{tab=Specifications}

Crawler

Length 374 mm (14.7 in.) with pan-and-tilt camera
182 mm (11.1 in.) with axial camera

Width 118 mm (4.6 in.)

Height 90 mm (3.5 in.)

Weight 8kg (17.6 lbs.)

Material Nickel plated brass, stainless steel, aluminum
Sonde 33 kHz or 512 Hz (optional)
Drive 2 x 20 W DC motor, 6-wheel drive, steerable, speed controls
Depth Rating 1 bar (14.7 psi)—Equivalent to water depth of 10 m (33 ft.)
Inclination +/- 10% optional

Wheel Sets

- Ø 86 mm (3.4 in.) wheels (6) for 115 mm or 6 in. pipe
- Ø 110 mm (4.3 in.) wheels (6) for 200 mm or 8 in. pipe
- Ø 135 mm (5.3 in.) extended wheels (4) for 225 mm or 10 in. pipe

Rating IP68

Control Unit

Size 420 mm (16.5 in.) D x 343 mm (13.5 in.) W x 292 mm (11.5 in.) H

Pendant Control Left/right steering, crawler speed, light intensity, modular slide-in cards for

Power 110/230 VAC, 50/60 Hz CE

Output NTSC composite (EIA-170A) video (PAL available)

19-inch rack mounted controller is available

Weight 18.2 kg (40.5 lbs.)

Lights

Camera 40 W, 16 x 0.6 W, halogen

Tractor 40 W, 2 x 20 W, halogen

Auxiliary 40 W, 2 x 20 W, dichroic reflector

Maximum 90 W

Cable Drum

Cable 7 mm (0.28 in.) diameter Multi-conductor with 227 kg (500 lbs.) Kevlar® strength member and

Length Available up to 200 m (660 ft.)

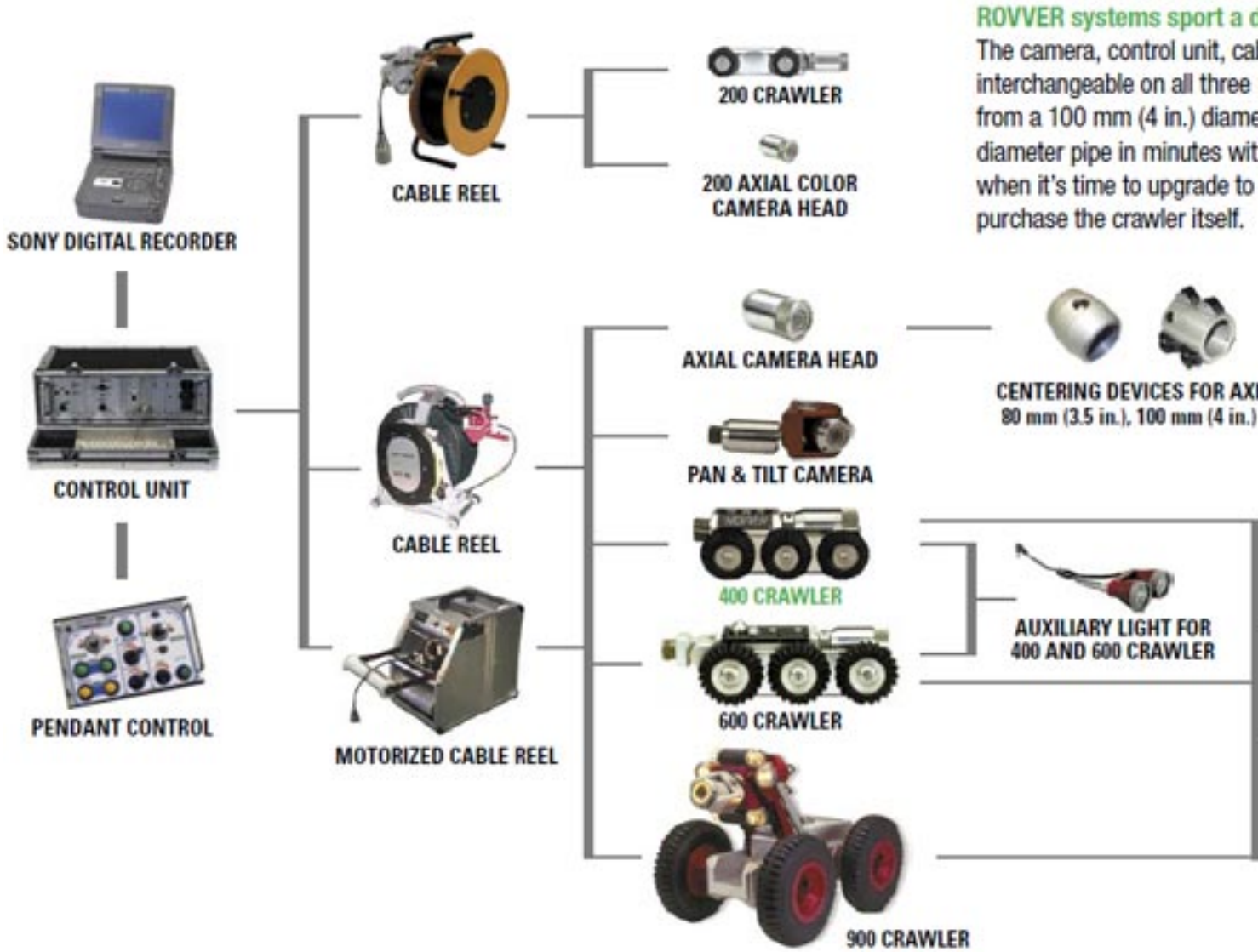
Drum Slip-ring cable drum with various cable length

Optional - automatic motorized cable reel with level wind feature

Weight Approximately 23 kg (50 lbs.) - model, cable length dependant

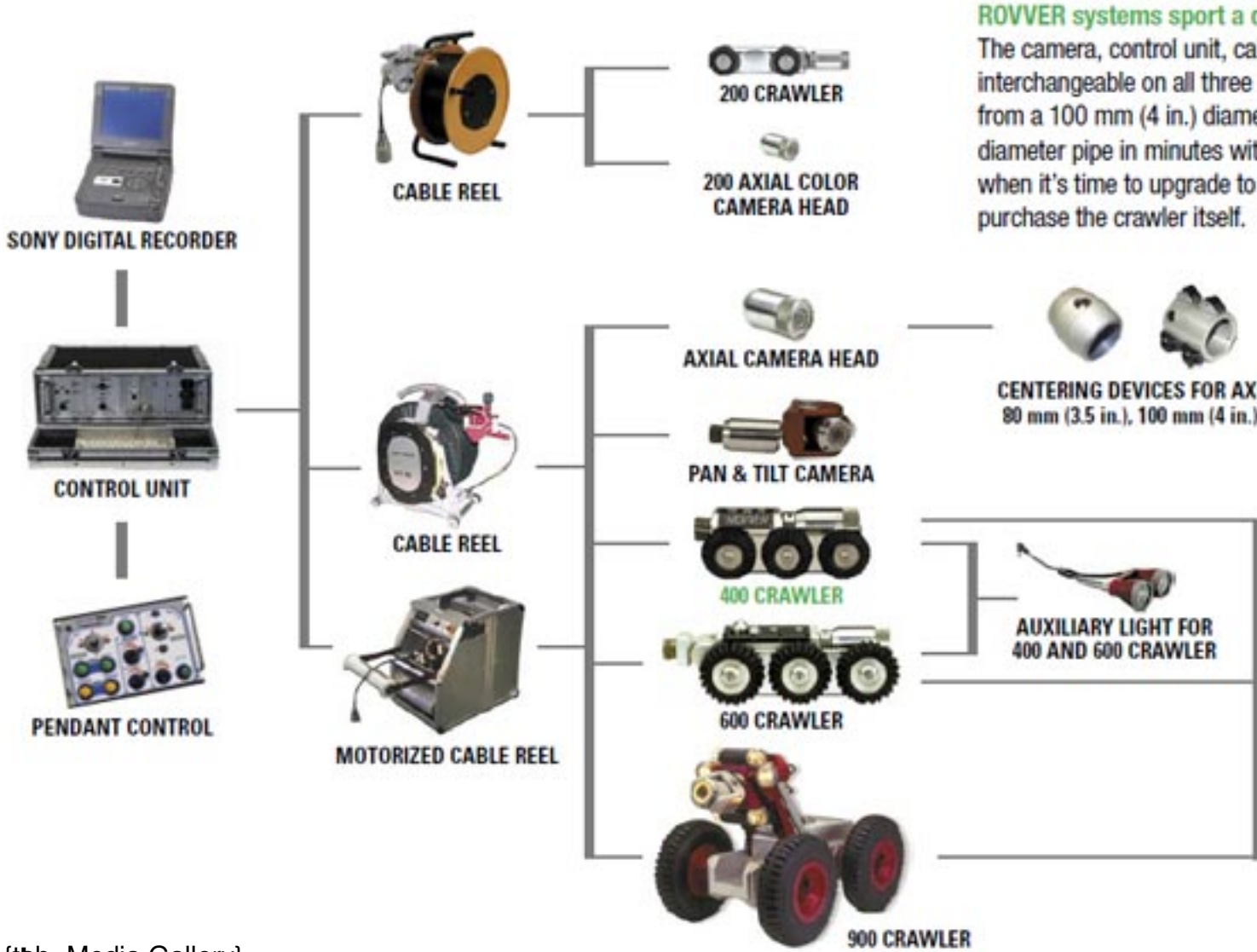
Rating IP64

Configuration



ROVVER systems sport a d
The camera, control unit, cab
interchangeable on all three
from a 100 mm (4 in.) diame
diameter pipe in minutes wit
when it's time to upgrade to
purchase the crawler itself.

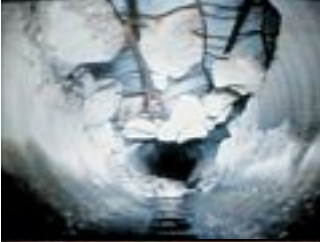
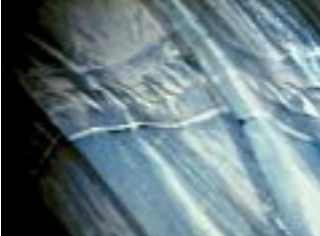
Configuration



ROVER systems sport a d
The camera, control unit, cab
interchangeable on all three
from a 100 mm (4 in.) diame
diameter pipe in minutes wit
when it's time to upgrade to
purchase the crawler itself.

{tba} Media Gallery







Videos



{/has/download}